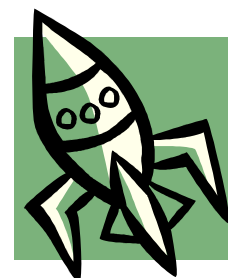
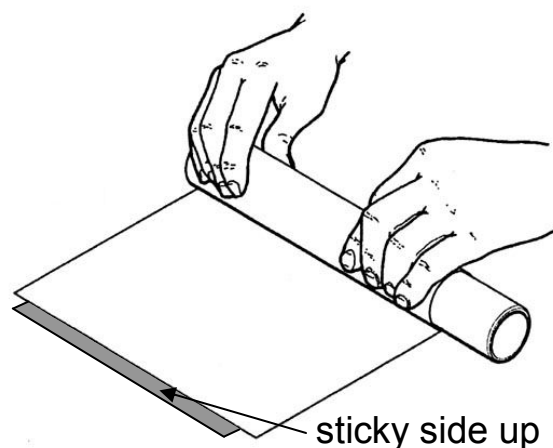


Rocket Factory



MAKE YOUR ROCKET BODY

1. Stick a piece of tape along the long edge of the coloured paper; half on the paper and half off.
2. Turn the paper over so that the sticky side is up and tape edge is away from you.
3. Roll the paper around the plastic rolling tube; starting at the edge with no tape. Keep rolling until the tape is stuck down.
4. Use 3 pieces of tape about 10 cm long to seal the end of the paper tube.



😊 **Top Tip:** Keep the plastic tube inside your rocket until you are ready to launch. This stops it being crushed!

MAKE YOUR NOSE CONE AND FINS:

5. Make a cone using the coloured card.
6. Decide how many fins you need and what shape they will be. Where and how will you attach them?
7. Now design and cut out the fins and stick them to the rocket

😊 **Top Tip:** A cone can easily be made from a circle – use your roll of tape to draw a circle.

😊 **Top Tip:** Your rocket needs to beat the forces of gravity and friction to go as high as possible. Is your rocket heavy or light? Do your fins have an aerodynamic shape?

Your rocket is now ready for testing



Rockets must ONLY be tested in the launching zone!